

## GENERAL INFORMATION

Official Special Olympics Mission Statement .....	1
Official Special Olympics Athlete Oath .....	1
Goal.....	1
Philosophy .....	1
Founding Principles .....	2
Values .....	3
Special Olympics Organization.....	4
Special Olympics Wisconsin Fact Sheet .....	5
Special Olympics Wisconsin Board of Directors .....	5
Regional Map.....	6
Staff Contact List.....	7

Left Blank Intentionally

## **OFFICIAL SPECIAL OLYMPICS MISSION STATEMENT**

The mission of Special Olympics is to provide year-round sports training and athletic competition in a variety of Olympic-type sports for children and adults with intellectual disabilities, giving them continuing opportunities to develop physical fitness, demonstrate courage, experience joy and participate in the sharing of gifts, skills and friendship with their families, other Special Olympics athletes and the community.

## **OFFICIAL SPECIAL OLYMPICS ATHLETE OATH**

*"Let me win. But if I cannot win, let me be brave in the attempt."*

## **GOAL**

The ultimate goal of Special Olympics is to help persons with intellectual disabilities participate as productive and respected members of society at large, by offering them a fair opportunity to develop and demonstrate their skills and talents through sports training and competition, and by increasing the public's awareness of their capabilities and needs.

## **PHILOSOPHY**

Special Olympics is founded on the belief that people with intellectual disabilities can, with proper instruction and encouragement, learn, enjoy and benefit from participation in individual and team sports, adapted as necessary to meet the needs of those with special intellectual and physical limitations.

Special Olympics believes that consistent training is essential to the development of sports skills, and that competition among those of equal abilities is the most appropriate means of testing these skills, measuring progress and providing incentives for personal growth.

Special Olympics believes that through sports training and competition, people with intellectual disabilities benefit physically, mentally, socially and spiritually; families are strengthened; and the community at large, both through participation and observation, is united in understanding people with intellectual disabilities in an environment of equality, respect and acceptance.

## **FOUNDING PRINCIPLES**

The principles on which Special Olympics was founded, and which must continue to guide the operation and expansion of the global Special Olympics Movement, include the following (collectively, the "Founding Principles"):

- People with intellectual disabilities can, with proper instruction and encouragement, enjoy, learn and benefit from participation in individual and team sports, adapted as necessary to meet the needs of those with special mental and physical limitations.
- Consistent training under the guidance of qualified coaches, with emphasis on physical conditioning, is essential to the development of sports skills, and competition among those of equal abilities is the most appropriate means of testing these skills, measuring progress and providing incentives for personal growth.
- Through sports training and competition: people with intellectual disabilities benefit physically, mentally, socially and spiritually; families are strengthened; and the community at large, both through participation and observation, is united with people with intellectual disabilities in an environment of equality, respect and acceptance.
- Every person with an intellectual disability who meets the eligibility requirements set out in the Special Olympics, Inc. General Rules should have the opportunity to participate in and benefit from the sports training and athletic competition programs offered by Special Olympics.
- Special Olympics must transcend all boundaries of race, gender, religion, national origin, geography, and political philosophy, and offer sports training and competition opportunities to all eligible persons with intellectual disabilities in accordance with uniform worldwide standards.
- Special Olympics celebrates and strives to promote the spirit of sportsmanship and a love of participation in sports for its own sake. To that end, Special Olympics aims to provide every athlete with an opportunity to participate in training and competition events which challenge that athlete to his or her fullest potential, regardless of the athlete's level of ability. Special Olympics therefore requires that Special Olympics Games and Tournaments offer sports and events which are appropriate for athletes of all levels of ability, and in the case of team sports, provide every athlete with an opportunity to play in every game.
- Special Olympics encourages sports training and competition opportunities at the local, area and community level (including schools) as a means of reaching the greatest number of eligible athletes.

## **VALUES**

***Mutual Respect, Positive Attitude, Accountability, Teamwork and Dedication  
Values SOWI lives by to create an environment of integrity where  
winning is more than coming in first.***

### **ACCOUNTABILITY**

- Maintain documentation of your job responsibilities and meet those expectations
- Trust others to do their job as you do yours
- Evaluate, process, learn and practice continuous improvement
- Demonstrate consistency between actions and words

### **TEAMWORK**

- All members are part of one team that is SOWI, where each persons job is understood and respected
- Be willing to contribute to, and be accountable for, the success of teammates through collaboration
- Create a safe environment where communication is free-flowing and respected
- Recognize and celebrate our successes

### **POSITIVE ATTITUDE**

- Be open to, and supportive of, new ideas
- Communicate constructively and directly, mindful of body language, tone of voice & overall politeness
- Be fully engaged in the SOWI experience
- Approach conflict proactively and project optimism to Movement stakeholders

### **MUTUAL RESPECT**

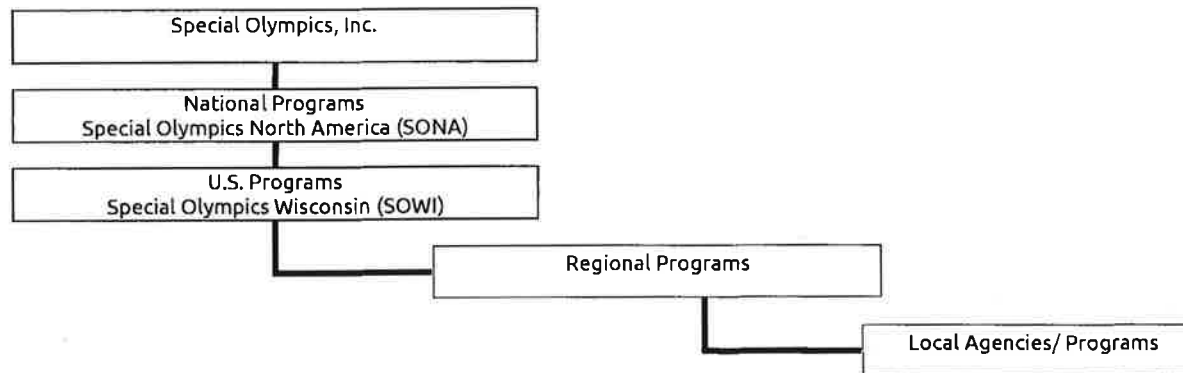
- Treat others as you would like to be treated
- Be mindful of others time commitments and circumstances
- Communicate in an honest, constructive and solution-driven manner at all times and maintain confidentiality when appropriate
- Recognize individual strengths, see common ground and practice forgiveness

### **DEDICATION**

- Be passionate about the mission of Special Olympics
- Embrace the athlete experience
- Commit to the strategic plan of the organization
- Demonstrate SOWI staff guiding values

Revised June 16, 2004  
Revised March 16, 2007  
Revised December 7, 2010  
Revised August 19, 2013

## SPECIAL OLYMPICS ORGANIZATION



### Special Olympics, Inc.

Special Olympics, Inc. is a worldwide program of sports training and athletic competition open to individuals with intellectual disabilities regardless of their abilities. The International Olympic Committee has granted its official recognition to Special Olympics, Inc. Special Olympics, Inc. is responsible for the overall leadership and management of Special Olympics while providing technical assistance to the national and state programs.

### Special Olympics North America

Special Olympics North America (SONA) is accredited by Special Olympics, Inc. and responsible for following the policies and rules established by Special Olympics, Inc. in the delivery of services in North America (i.e. Canada, the United States and Mexico).

### Special Olympics Wisconsin, Inc.

Special Olympics Wisconsin (SOWI) is a non-profit [501(c)(3)] charitable organization incorporated in the state of Wisconsin to provide sports training and athletic competition for persons with intellectual disabilities. SOWI is accredited by Special Olympics, Inc. and is responsible for following the policies and rules established by Special Olympics, Inc. in the delivery of services in Wisconsin. It is known as a Program of Special Olympics. The Special Olympics Wisconsin Board of Directors provides policy and long-range planning decisions. The Board of Directors employs a staff of people to implement the day-to-day operations.

### Region

Regional programs are geographic regions of the state which are established to provide support, assistance, and competitive opportunities to local Agencies. Wisconsin is currently divided into seven Regions to serve the athletes, coaches, families and volunteers of our various communities. Each Region is staffed by full-time employees and has an active management team of volunteers that provides assistance with the Regional operations.

### Agency

An Agency consists of a local group of individuals with intellectual disabilities who wish to train and compete in Special Olympics as well as an Agency Management Team which is willing to organize safe, quality training for these athletes (minimum of two adult Class A volunteers, one serving as Agency manager). The Agency manager oversees all aspects of the Agency including training, competition, fundraising, public relations, family involvement, financial responsibilities and administration. They receive all mailings, phone calls and paper work for the Agency and are responsible for distributing and communicating all pertinent information to their Agency Management Team, head coaches, assistant coaches and family members as appropriate. Most importantly, an Agency manager agrees to uphold the philosophy, principles, values and policies of Special Olympics, Inc. and SOWI for the benefit of the athletes.

## SPECIAL OLYMPICS WISCONSIN FACT SHEET

SOWI provides fact sheets about the organization for Agencies to include in their communications materials. Please visit [SpecialOlympicsWisconsin.org](http://SpecialOlympicsWisconsin.org) and click on "About Us" and then select Regions to obtain a PDF of your Regions' fact sheet or the State Office fact sheet. For more information about fact sheets, please contact the SOWI Marketing & Communications Department. Templates to create a fact sheet for your Agency are available on the Agency log in page of the website.

## SPECIAL OLYMPICS WISCONSIN BOARD OF DIRECTORS

### 2016 - 2017 OFFICERS AND MEMBERS

#### CHAIR

John Cayer  
Mequon

#### CHAIR ELECT

Vince Vitrano  
Milwaukee

#### TREASURER

Marc Cadieux  
Milwaukee

#### SECRETARY

Michael Grubich  
Brookfield

#### MEMBERS

Angela Achenbach  
Milwaukee

Mike Buck  
Eau Claire

Judge Phil  
Chavez  
Milwaukee

Teresa Clark  
La Crosse

Dr. Beverly DeGroot  
Madison

Martha Hill  
Sheboygan

Ronald Irwin  
Greendale

Bill Jones  
Germantown

David Kriete  
Milwaukee

Israel Lopez  
Madison

Jeffrey Mahloch  
East Troy

Marta Newhart  
Milwaukee

Brittany Ogden  
Madison

Sheriff Kurt  
Picknell  
Elkhorn

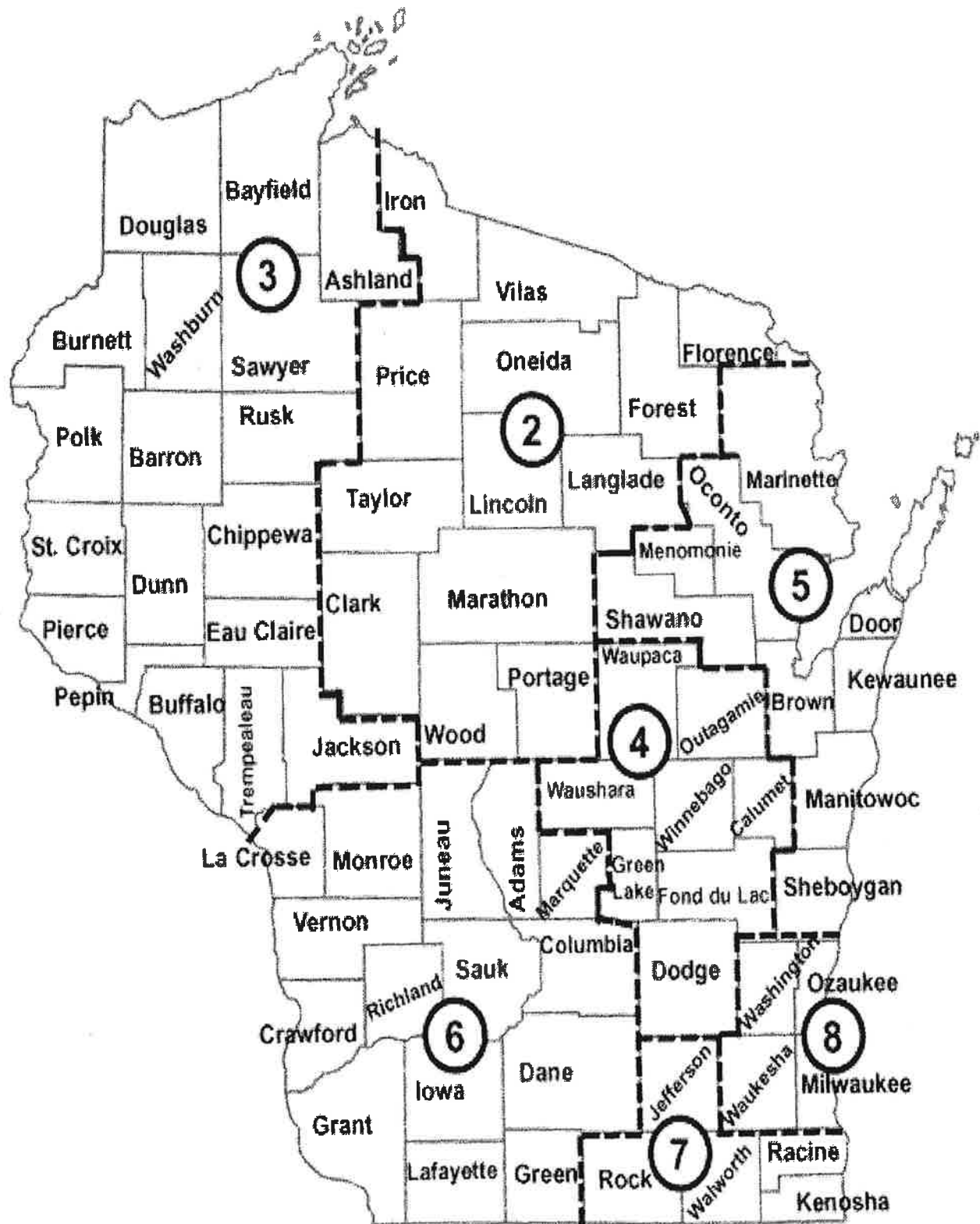
Tom Shafranski  
Stevens Point

Chief Ronald  
Tischer  
La Crosse

Jerry Vite  
Mequon

George Whitely  
Madison

## REGIONAL MAP





# 2017 SPECIAL OLYMPICS WISCONSIN STAFF CONTACT LIST

## SOWI STATE OFFICE

2310 Crossroads Drive, Ste. 1000 • Madison, WI 53718 • 608-222-1324, 800-552-1324, F 608-222-3578 • [www.specialolympicswisconsin.org](http://www.specialolympicswisconsin.org)

<b>Operations</b>	Kathleen Roach – (608) 442-5680 President/CEO <a href="mailto:kroach@specialolympicswisconsin.org">kroach@specialolympicswisconsin.org</a>	Mary Beaty (608) 442-5681 Director of Administration & Finance <a href="mailto:mbeaty@specialolympicswisconsin.org">mbeaty@specialolympicswisconsin.org</a>	Jeanne Hrovat – (608) 442-5666 Director of Special Projects <a href="mailto:jhrovat@specialolympicswisconsin.org">jhrovat@specialolympicswisconsin.org</a>
		Theresa Rossman – (608) 442-5664 Gift Records Manager <a href="mailto:trossman@specialolympicswisconsin.org">trossman@specialolympicswisconsin.org</a>	Kathi Genin (608) 442-5665 Database Administrator <a href="mailto:kgenin@specialolympicswisconsin.org">kgenin@specialolympicswisconsin.org</a>
<b>Sports and Wellness</b>	Bob Whitehead – (608) 442-5661 Vice President of Sports and Wellness <a href="mailto:bwhitehead@specialolympicswisconsin.org">bwhitehead@specialolympicswisconsin.org</a>	Melissa Schoenbrodt – (608) 442-5676 Senior Director of Health Programs <a href="mailto:mschoenbrodt@specialolympicswisconsin.org">mschoenbrodt@specialolympicswisconsin.org</a>	Samantha Sotelo – (608) 442-5677 Athlete Records Manager <a href="mailto:ssotelo@specialolympicswisconsin.org">ssotelo@specialolympicswisconsin.org</a>
	Brittany Hoegh – (608) 442-5683 Director of Training <a href="mailto:bbergen@specialolympicswisconsin.org">bbergen@specialolympicswisconsin.org</a>	Don Wigington – (608) 442-5905 Senior Director of Unified Sports <a href="mailto:dwigington@specialolympicswisconsin.org">dwigington@specialolympicswisconsin.org</a>	Mark Wolfgram – (608) 442-5673 Senior Director of Field Services <a href="mailto:mwolfgram@specialolympicswisconsin.org">mwolfgram@specialolympicswisconsin.org</a>
	Erin Muehlenkamp – (608) 442-5682 Program Services Administrative Assistant <a href="mailto:emuehlenkamp@specialolympicswisconsin.org">emuehlenkamp@specialolympicswisconsin.org</a>		
<b>Marketing and Communication</b>	Jennifer Wagner – (608) 442-5669 Vice President of Marketing and Communication <a href="mailto:jwagner@specialolympicswisconsin.org">jwagner@specialolympicswisconsin.org</a>	Shannon Adams – (608) 442-5672 Director of Marketing <a href="mailto:sadams@specialolympicswisconsin.org">sadams@specialolympicswisconsin.org</a>	Tammy Hahn – (608) 442-5903 Director of Marketing <a href="mailto:thahn@specialolympicswisconsin.org">thahn@specialolympicswisconsin.org</a>
	Tommy Jaime – (608) 442-5675 Director of Communications <a href="mailto:tjaime@specialolympicswisconsin.org">tjaime@specialolympicswisconsin.org</a>		
<b>Development</b>	Michael Mortell – (608) 442-5662 Vice President of Development <a href="mailto:mmortell@specialolympicswisconsin.org">mmortell@specialolympicswisconsin.org</a>	Julie Drake – (608) 442-5668 Senior Director of LETR <a href="mailto:jdrake@specialolympicswisconsin.org">jdrake@specialolympicswisconsin.org</a>	Brandi Niermeier – (608) 442-5660 Grants Manager <a href="mailto:bniermeier@specialolympicswisconsin.org">bniermeier@specialolympicswisconsin.org</a>
	Claire Essman – (262) 241-7786 Director of Individual Giving <a href="mailto:cessman@specialolympicswisconsin.org">cessman@specialolympicswisconsin.org</a>		

## REGIONAL OFFICES

### North Central Region 2 • 2804 Rib Mountain Dr., Ste. C, Wausau, WI 54401 • P: 715-848-0550, 877-848-0550 • F: 715-848-0880

Jenna Jehlicka – Athletic Director  
[jjehlicka@specialolympicswisconsin.org](mailto:jjehlicka@specialolympicswisconsin.org)

Jordan Becker – Director of Special Events  
[jbecker@specialolympicswisconsin.org](mailto:jbecker@specialolympicswisconsin.org)

### Indianhead Region 3 • 2023 Fairfax St., Eau Claire, WI 54701 • P: 715-833-0833, 800-833-5851 • F: 715-833-0507

Melissa Maxwell – Athletic Director  
[mmaxwell@specialolympicswisconsin.org](mailto:mmaxwell@specialolympicswisconsin.org)

Karen Kraus – Director of Special Events  
[kkraus@specialolympicswisconsin.org](mailto:kkraus@specialolympicswisconsin.org)

### Fox Valley Region 4 • W5361 CTY KK, Ste. D • Appleton, WI 54915 • P: 920-731-1614, 800-704-1614 • F: 920-731-3691

Jody LaPlante – Athletic Director  
[jlaplante@specialolympicswisconsin.org](mailto:jlaplante@specialolympicswisconsin.org)

Nicci Sprangers – Senior Director of Special Events  
[nsprangers@specialolympicswisconsin.org](mailto:nsprangers@specialolympicswisconsin.org)

### Northeastern Region 5 • 2140 Holmgren Way, Green Bay, WI 54304 • P: 920-497-2422, 800-707-2422 • F: 920-497-0126

Carla Lieb – Athletic Director  
[clieb@specialolympicswisconsin.org](mailto:clieb@specialolympicswisconsin.org)

Matt Harper – Director of Corporate Partnerships  
[mharper@specialolympicswisconsin.org](mailto:mharper@specialolympicswisconsin.org)

### South Central Region 6 • 2310 Crossroads Dr. Ste. 1000, Madison, WI 53718 • P: 608-222-1324, 800-552-1324 • F: 608-222-3578

Kate Bergmann – Athletic Director  
[kbergmann@specialolympicswisconsin.org](mailto:kbergmann@specialolympicswisconsin.org)

Beth Hopkins – Director of Special Events  
[bhopkins@specialolympicswisconsin.org](mailto:bhopkins@specialolympicswisconsin.org)

### Southeastern Region 7 • 6100 Washington Ave. Ste. E1, Racine, WI 53406 • P: 262-598-9507, 800-924-4320 • F: 262-598-9509

Troy Anderson – Athletic Director  
[tanderson@specialolympicswisconsin.org](mailto:tanderson@specialolympicswisconsin.org)

Brittany Neukirchen – Director of Special Events  
[bneukirchen@specialolympicswisconsin.org](mailto:bneukirchen@specialolympicswisconsin.org)

### Greater Milwaukee Region 8 • 10224 N Port Washington Rd., Mequon, WI 53092 • P: 262-241-7786, 800-924-5202 • F: 262-241-5334

Jason Blank – Athletic Director  
[jblank@specialolympicswisconsin.org](mailto:jblank@specialolympicswisconsin.org)

Jessica Paczesny – Administrative Assistant  
[jpaczesny@specialolympicswisconsin.org](mailto:jpaczesny@specialolympicswisconsin.org)

Left Blank Intentionally